

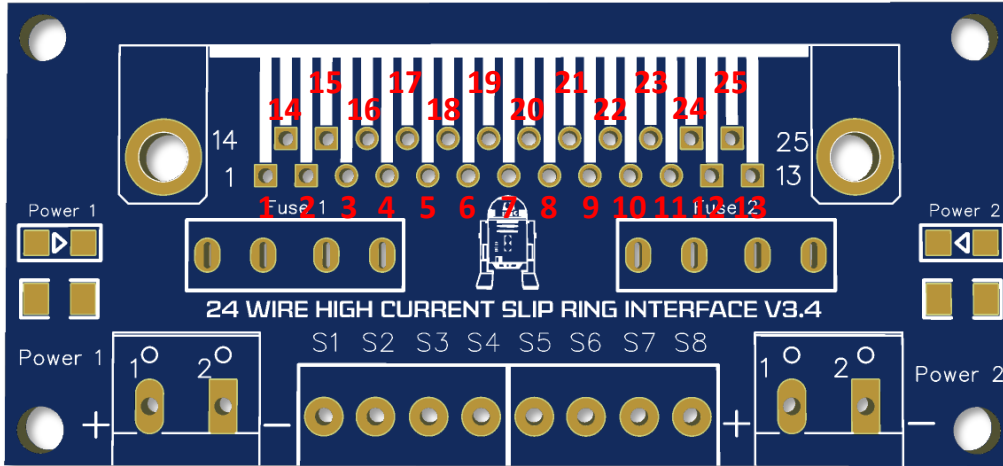
Slipring Adapter Connections(no RJ45)

v1.3 – 2022/11

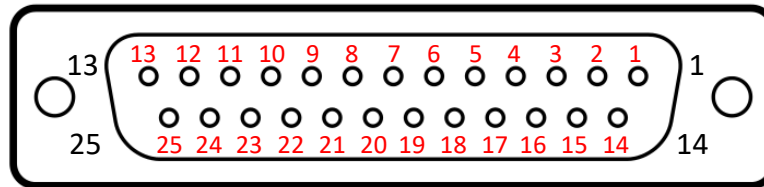
www.printed-droid.com

The latest diagrams and files can always be found here:

<http://www.printed-droid.com/files/>



Adapter on PCB



Connections:

- | | |
|----------------|----------------|
| 1 - GROUND | 14 - GROUND |
| 2 - GROUND | 15 - GROUND |
| 3 - POWER 1 + | 16 - POWER 1 + |
| 4 - POWER 1 + | 17 - POWER 1 + |
| 5 - Signal 1 | 18 - Signal 2 |
| 6 - Signal 3 | 19 - Signal 4 |
| 7 - UNUSED! | 20 - Signal 5 |
| 8 - Signal 6 | 21 - Signal 7 |
| 9 - Signal 8 | 22 - POWER 2 + |
| 10 - POWER 2 + | 23 - POWER 2 + |
| 11 - POWER 2 + | 24 - GROUND |
| 12 - GROUND | 25 - GROUND |
| 13 - GROUND | |

Recommended Fuse: 7.5A or 10A