

# BENDUINO DOME AIO 1.4.5

v1.0 - 10/2020

[www.printed-droid.com](http://www.printed-droid.com)

The latest diagrams and files can always be found here:

<http://www.printed-droid.com/files/>

The Benduino Dome AIO PCB is pretty straight forward.

It combines The Dome Master, Dome Slave & the Flthy Holoboard on one PCB.

The Design is made to offer best comfort with less wiring and a full integration in the Astrocomms System.

### Outputs:

2x12 Servos (You'll need 12 panel servos and 6 Holo Servos)

1x Signal to Teeces

1x Signal to MP3 Trigger

I2C from Dome Master

### You can connect:

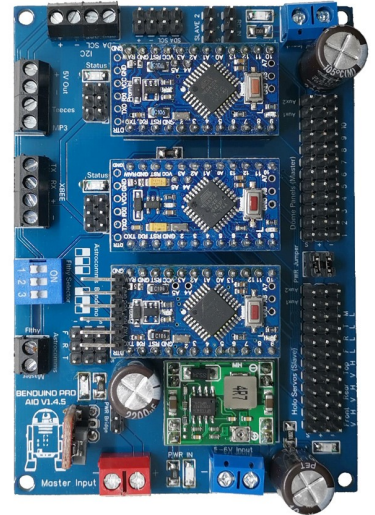
XBEE

Astrocomms (selectable with dip switch)

### Other features:

2 Buck convertes. 1 for the Arduinos and one for the servos.

All relevant connections are available as terminal screws



How is everything connected? Basically it's the „original“ Marcdduino Master/Slave & Flthy Wiring but all wires are replaced with traces and everything's on one pcb.

There are 3 power in terminals. Left for the Arduinos (input 7-12V) 2x right for the servos (5-6V).

If you don't want to use the right terminal you can use the power bridge jumper to feed the 6V/3A or D24V50F5 Buck converter via the 712V input and the step down will power the servos - depending on your servos i suggest a stable 5V input for each servo rail independent!

The Master Benduino runs the regular Marcdduino Master Firmware (normal or reversed)

The Slave Benduino runs the regular Marcdduino Slave Firmware

The Flthy Arduino runs the regular Flthy Holo Firmware

Via the Dip Switches you select if the Flthy is controlled via the Astrocomms or the Benduino (if no Astrocomms connected)

