

Bens R2-D2 Electronic Diagram for the Astrocomms Mega Shield PRO

v1.1 - 03/2020

www.printed-droid.com

The latest diagrams and files can always be found here:
<http://www.printed-droid.com/files/>

The Astrocomms Mega Shield Pro allows simultaneous connection and use of the Controller and the Smartphone app to trigger the Marcdiuno and Flthy Holoprojector System. Bevor that you had to decide if you want the app or the controller - or use a switch to toggle between them.

Basically it just sits like an interpreter between the Body Arduino (running Shadow MD), the Master Dome & Body Marcduinios and the Flthy Holoboard. The Xbee is not longer directly connected to the Marcdiuno Dome Master. It's plugged into the Astrocomms Mega Shield. Also the Flthy Holoboard is not longer connected to the Marcdiuno, it receives it's commands from the Astrocomms.

It's working in real time with no noticeable latency! And there are much more features coming 😊

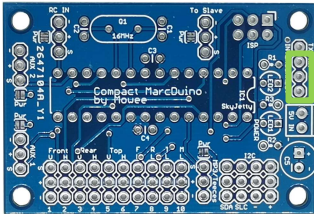
Spanish Thread: <http://bit.ly/2RjzG5L>

English Thread: <http://bit.ly/2NTTISj>

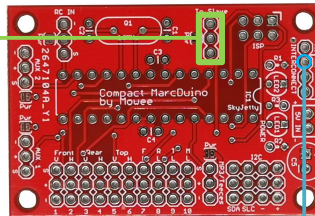
<https://www.printed-droid.com/kb/astrocomms-mega-shield/>

The Astrocomms Mega Shield Pro was developed 2020 by walex & Nitewing

Marcdiuno Dome Slave

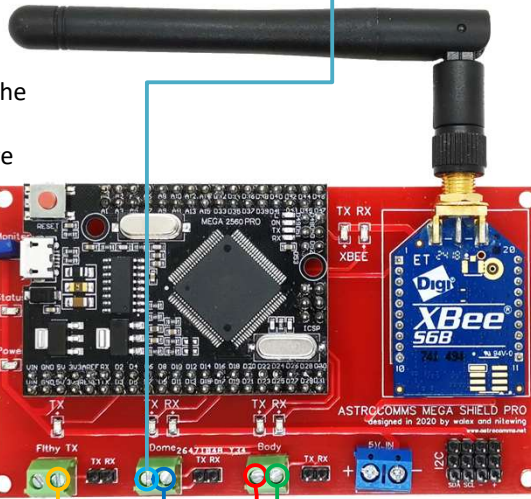


Marcdiuno Dome Master

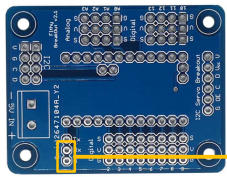


Please notice that this is just a basic wiring diagram. No servos etc. added as this information can be found in the big diagram

Astrocomms Mega Shield Pro has the Mega 2560 Pro direct attached - running the Astrocomms Firmware

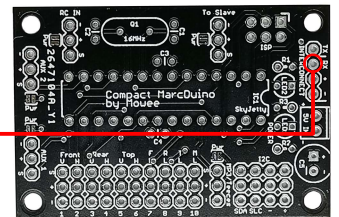


The Xbee is direct attached to the Astrocomms Mega Shield Pro



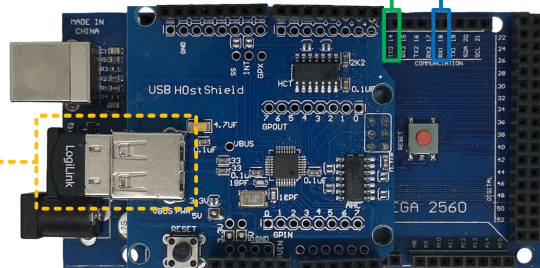
Flthy Holo Board

Marcdiuno Body Master



PS Move Navigation Controller

Connected via Bluetooth



Body Arduino Mega 2560 with USB Host Shield and Bluetooth Dongle - running the Shadow MD Software